




# *Vision of Hong Kong Youth*

LAU Tik Sze Daisy | MAK Lai Hung Hayley

ATAL Building Services Engineering Ltd.

fppt.com

- 
- Journey to Copenhagen, Denmark and Sweden, Malmo
  - Difference between Copenhagen and Hong Kong
  - Resistances of going green in Hong Kong
  - What we are thinking of creating a better Hong Kong





















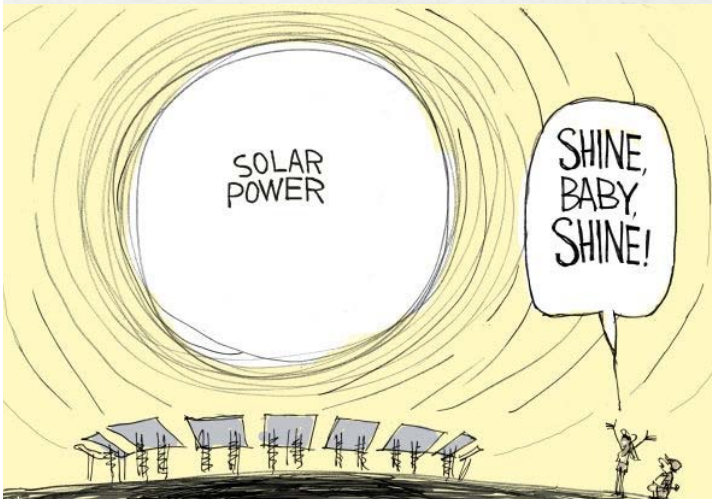
**Building Waste-to-energy Plant  
Amager Bakke, Copenhagen**




**Waste-to-energy Plant  
Amager Resource Centre**



Building Waste-to-energy Plant  
Amager Bakke, Copenhagen





- 
- Journey to Copenhagen, Denmark and Sweden, Malmo
  - Difference between Copenhagen and Hong Kong
  - Resistances of going green in Hong Kong
  - What we are thinking of creating a better Hong Kong

Copenhagen  
2,673 km<sup>2</sup>



Hong Kong  
1,104 km<sup>2</sup>







Hong Kong  
6,644 persons/ km<sup>2</sup>



Copenhagen  
2,502 persons/ km<sup>2</sup>

---

Hong Kong  
1.35 kg/ person/ day



Copenhagen  
1.12 kg/ person/ day





Hong Kong  
**63%**  
waste to landfill



Copenhagen  
**less than 2%**  
waste to landfill



Copenhagen





# Copenhagen



# Copenhagen

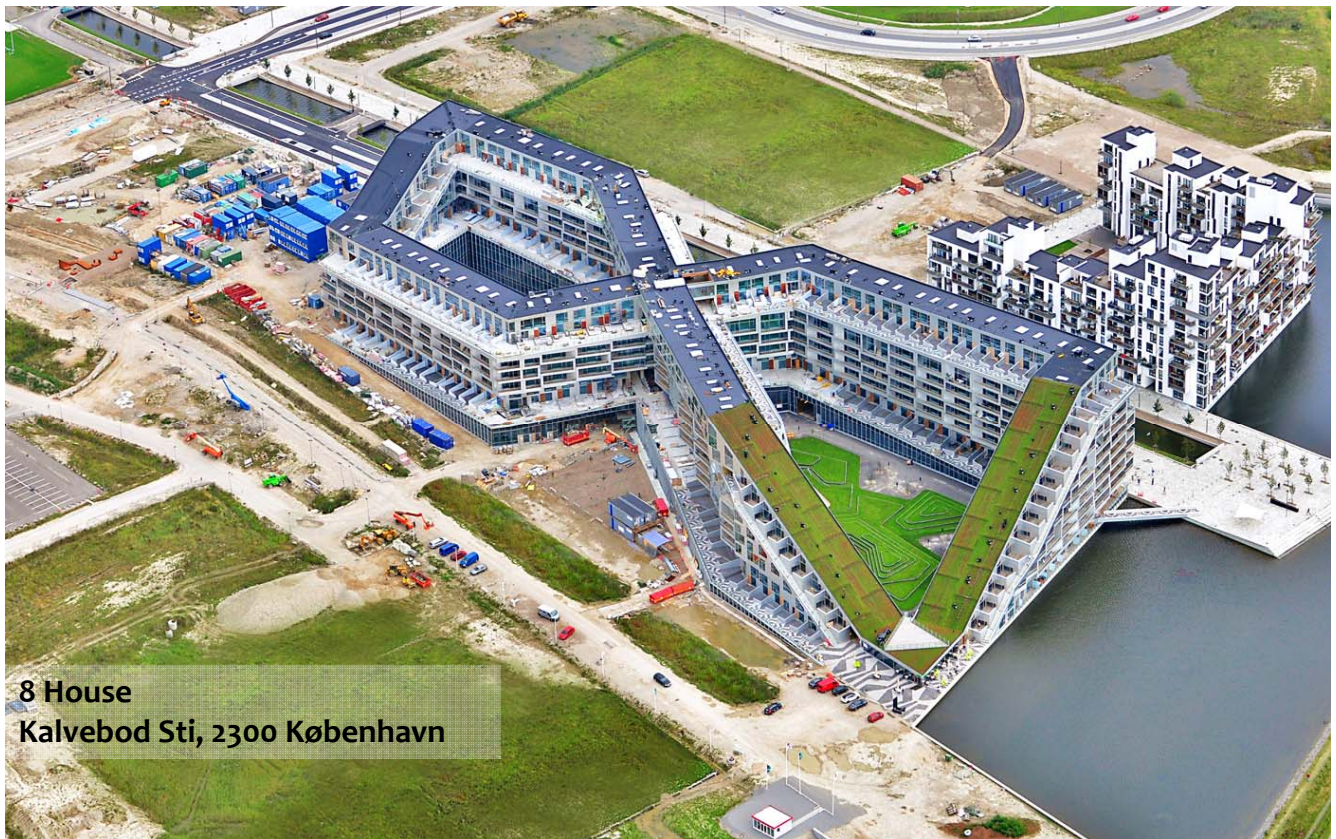




# Hong Kong



We are Lack of Space!



8 House  
Kalvebod Sti, 2300 København













ARC, Amager Resource Centre, Copenhagen



T-Park, Tsang Tsui, Tuen Mun, Hong Kong



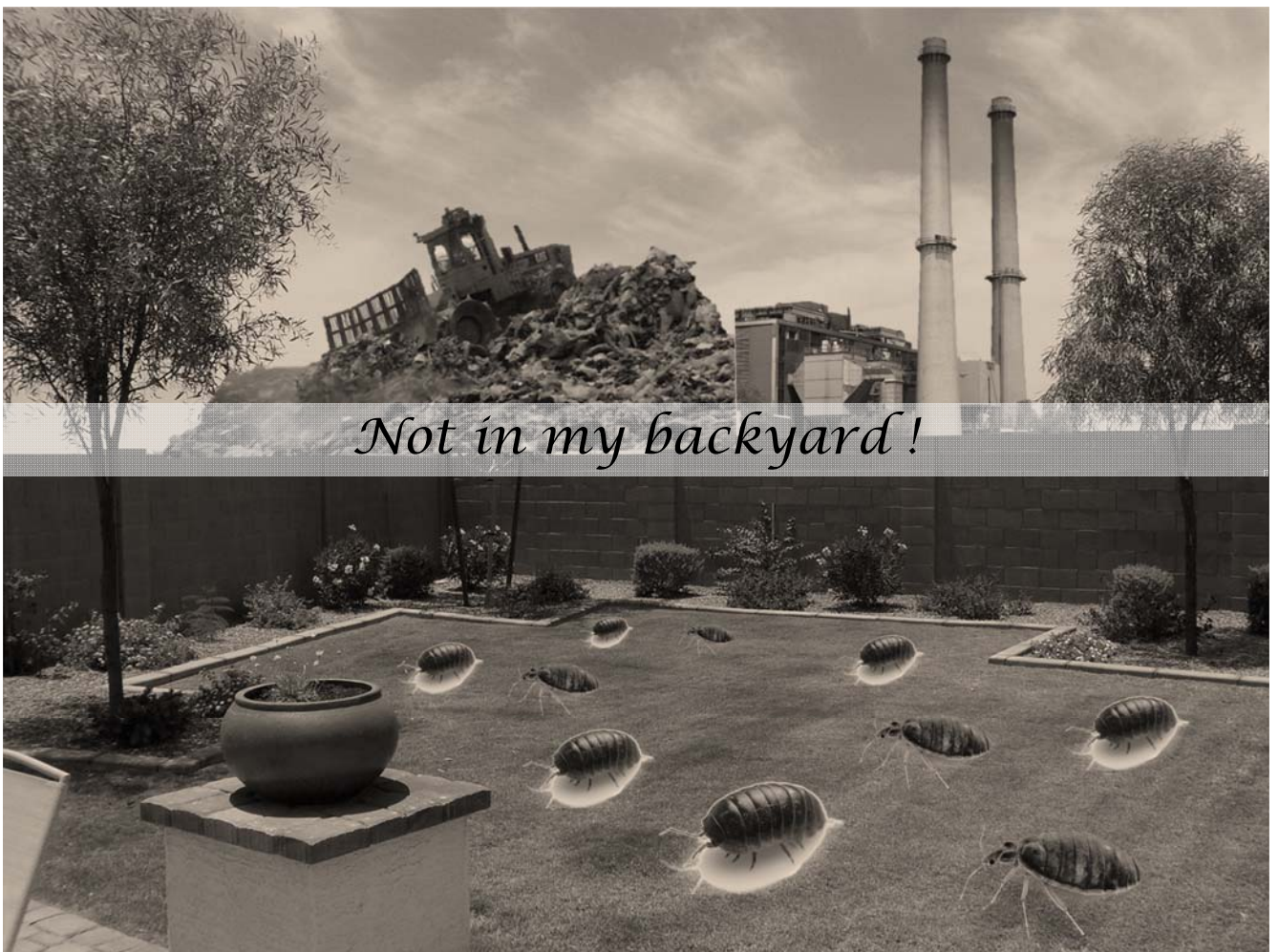


## Copenhagen-Bicycle city




- Journey to Copenhagen, Denmark and Sweden, Malmö
- Difference between Copenhagen and Hong Kong
- Resistances of going green in Hong Kong
- What we are thinking of creating a better Hong Kong







- 
- The background of the slide is a composite image. On the left, there is a view of Earth from space, showing green landmasses and white clouds. A white curved line, resembling a satellite orbit or a stylized 'C', starts from the top left and curves downwards towards the bottom left. The rest of the background is a dark, almost black, curved surface that also follows the curve of the white line.
- Journey to Copenhagen, Denmark and Sweden, Malmo
  - Difference between Copenhagen and Hong Kong
  - Resistances of going green in Hong Kong
  - What we are thinking of creating a better Hong Kong

The background of the slide is identical to the one above, featuring a view of Earth from space on the left, a white curved line, and a dark curved surface on the right.

Incinerator

# Waste to Energy Plant

fppt.com

## Waste to Energy Plant Inside Caverns with Suction Tunnel/ underground conveyor

Waste to Energy Plant Inside Caverns

Recycle

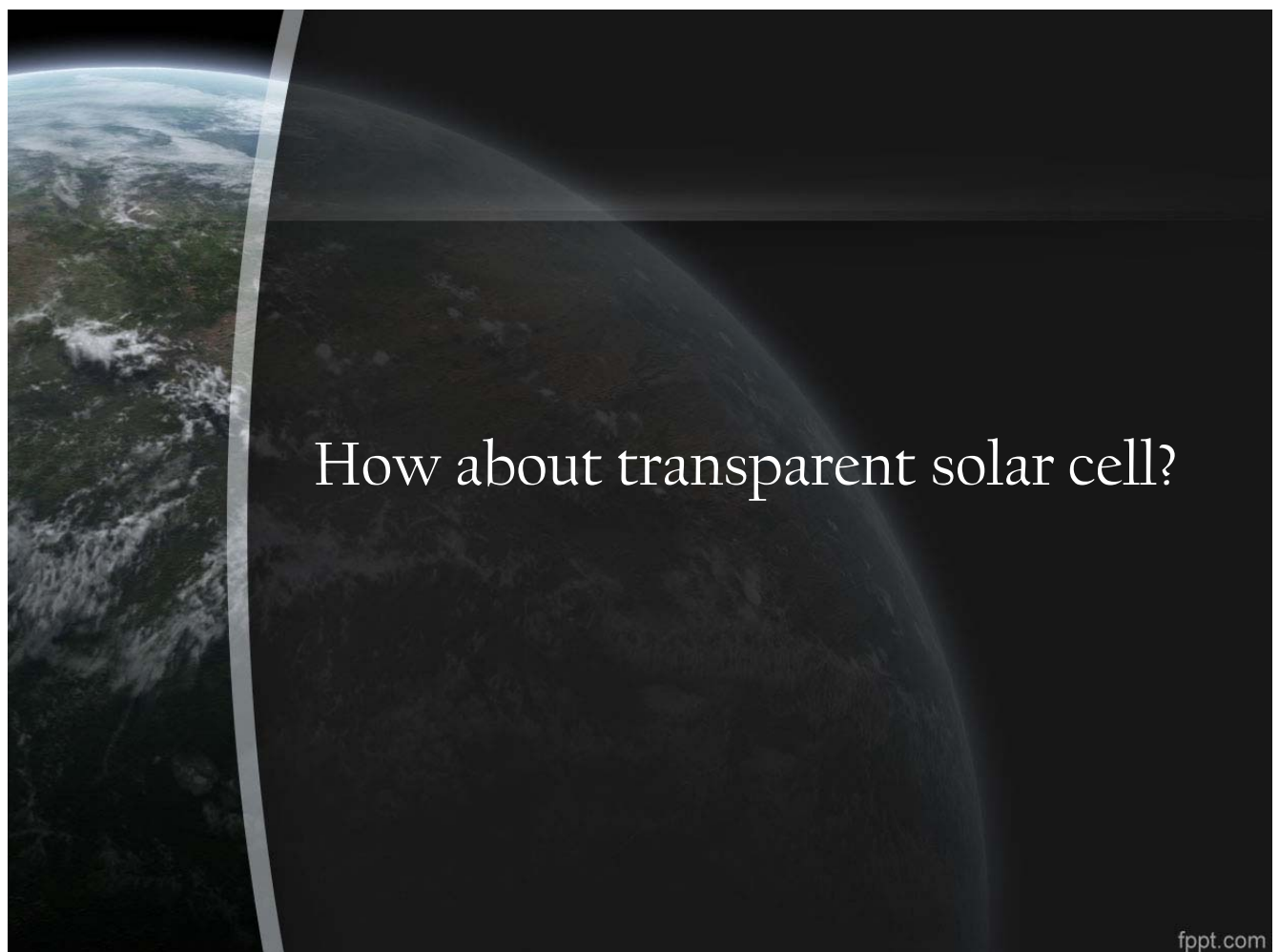


Powerful  
Shredding  
Machine



Suction Tunnel / underground conveyor for  
transportation of fragmentary rubbish







Demo – Transparent Solar Cell



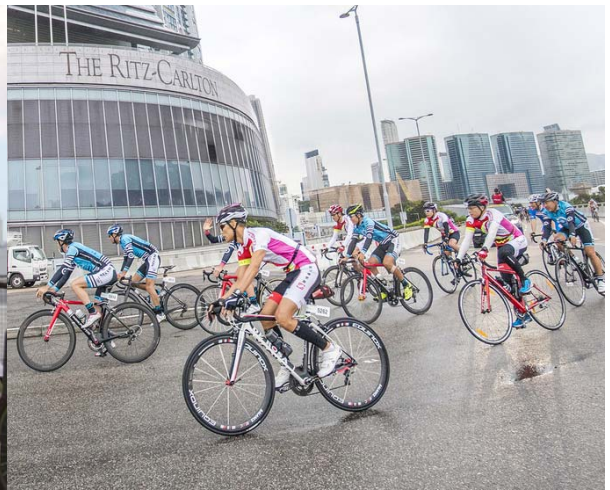




Transparent Solar Cell with Photochromic Lens











- Journey to Copenhagen, Denmark and Sweden, Malmo
  - Solar Energy
  - Wind Energy
  - Waste-to-energy
  - Green Roof/ Green Wall
- Difference between Copenhagen and Hong Kong
  - Urban Area
  - Population Density
  - MSW Production
  - Portion of Waste to landfill
  - Waste Recycling
  - Green Roof/ Green Wall
  - Waste-to-energy Plant
  - Use of Bicycle
- Resistances of going green in Hong Kong
  - Not in my backyard!
- What we are thinking of creating a better Hong Kong
  - Waste to Energy Plant Inside Caverns
  - Transparent solar cell apply to buildings
  - Cycling city





**Thank you!**